

IMPROVE EDUCATION
 PROTECT THE ENVIRONMENT
 ADDRESS INFRASTRUCTURE CHALLENGES
 ADOPT SUSTAINABLE ECONOMIC STRATEGIES
 MEET HUMAN NEEDS & PRESERVE LOCAL CULTURE

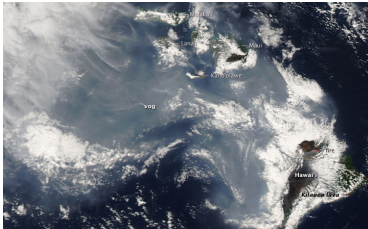
FOCUS OUR
 MAUI ISLANDS
 NUI OUR FUTURE

Own it!

Hawai'i's SMOKY MOUNTAIN



Unlike the mountain range rising along the Tennessee-North Carolina border in the southeastern United States Hawai'i's smoky mountain really smokes. Kilauea volcano on the island of Hawaii has been erupting continuously since 1983. The summit vent at *Halema'uma'u* emits around 660 tons of sulfur dioxide a day, according to recent measurements. Unlike smog, which is formed largely from the incomplete combustion of fuel reacting with nitrogen oxides and ozone produced from carbon monoxide by reactions with sunlight, vog is formed when sulfur oxides emitted by a volcano react with moisture. Both reactions



Satellite view of vog flowing eastward over Maui County during a Kona wind.

form a mixture of gases and aerosols. Most of the year Maui Nui is protected by prevailing trade winds, however prolonged periods of southerly Kona winds can cause vog to

affect the islands across the entire state. Health effects from vog exposure, particularly from the sulfur dioxide (SO₂), vary greatly among individuals as well as by distance from the source. Common symptoms include headaches, breathing difficulties, increased susceptibility to respiratory ailments, watery eyes, and sore throat.

To reduce the health impacts of vog

- ☛ drink lots of fluids, warm liquids seem to work best
- ☛ take it easy, don't overexert yourself physically
- ☛ avoid exposure, stay indoors, keep air flow out
- ☛ indoor plants, especially spider plants may help clean the air

"High amounts of the noxious gas have been emitted from the vent ...but most people forget about it for most of the year because trade winds blow it out of sight."

~ Hawaii Tribune-Herald
 January 23, 2010



FOCUS MAUI NUI is a community-driven vision for the future of our islands, spearheaded by Maui Economic Development Board, Inc., a nonprofit organization dedicated to the economic well-being of Maui County. VISIT www.focusmauinui.com or CALL 808.270.6801